

# THE NATIONAL MUSEUM OF

Design Architect: Douglas J. Cardinal. Architects: Douglas J. Cardinal Architect Limited et/and



## *The Architect's Statement*

The Museum will be a symbolic form. It will speak of the emergence of this continent, its forms sculptured by the winds, the rivers, the glaciers. It will speak of the emergence of man from the melting glaciers; of man and woman living in harmony with the forces of nature and evolving with them. It will show the way in which man first learned to cope with the environment, then mastered it and shaped it to the needs of his own goals and aspirations. It will depict man as a creature of the earth who knows his tremendous power to

change his environment, yet understands that he must live in harmony with it.

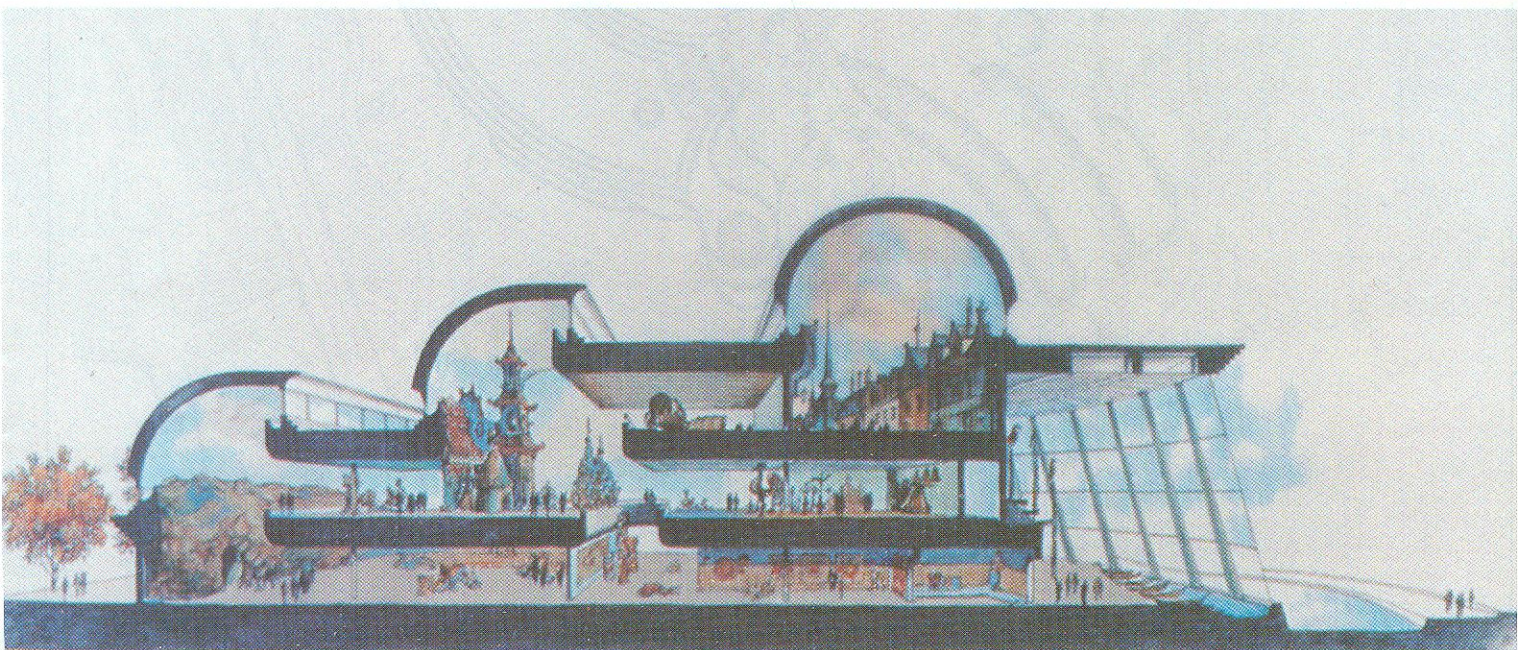
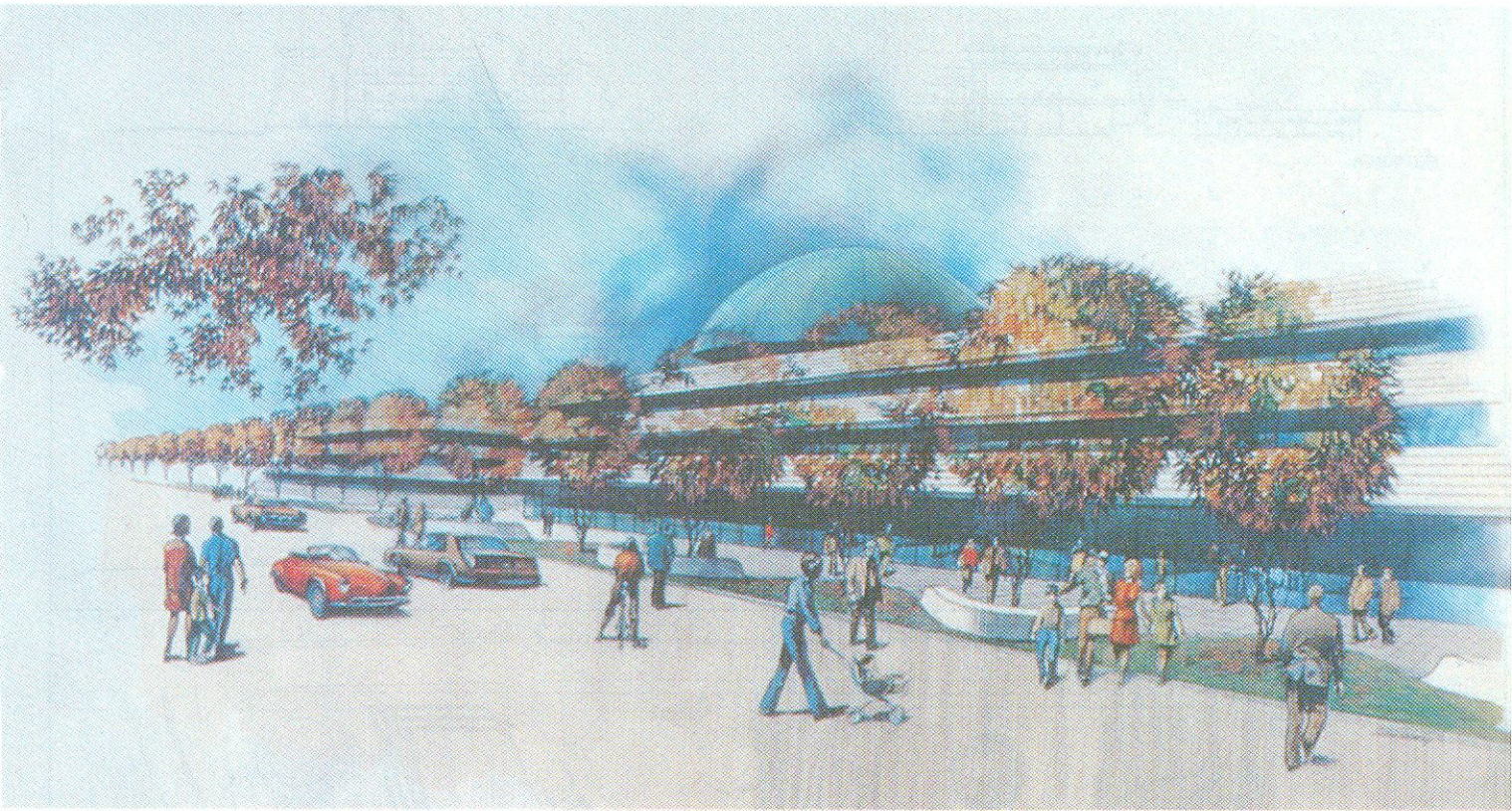
The building itself should truly aspire to be an artifact of our time, a celebration of man's evolution and achievement. It should point optimistically to the future, promising man's continued growth to a higher form of life, exploring not just this continent or planet but outer space as well. It should endeavour to be a spiritual act, and should demand from all those contributing to its design and construction the very best of their endeavours.

*Douglas J. Cardinal*

# MAN, HULL, QUEBEC

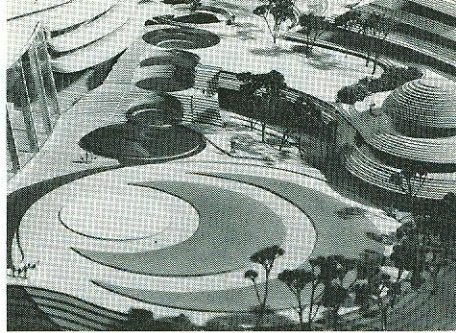
The Canadian  
Architect  
February 1984  
p.32-35

Tétreault Parent Languedoc et Associés Inc.



# THE NATIONAL MUSEUM OF MAN

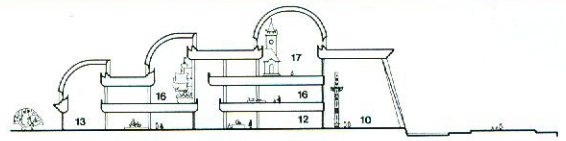
The Canadian  
Architect  
February 1984  
p 32-35



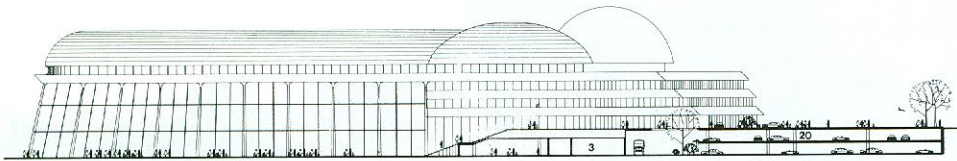
Left: looking east to Laurier Street with sequence of pools dropping down from Laurier and the museum entrance. The entrance and glazed grand hall are on the left. To the right is the Resource Centre and beyond, the restaurant.



SECTION A

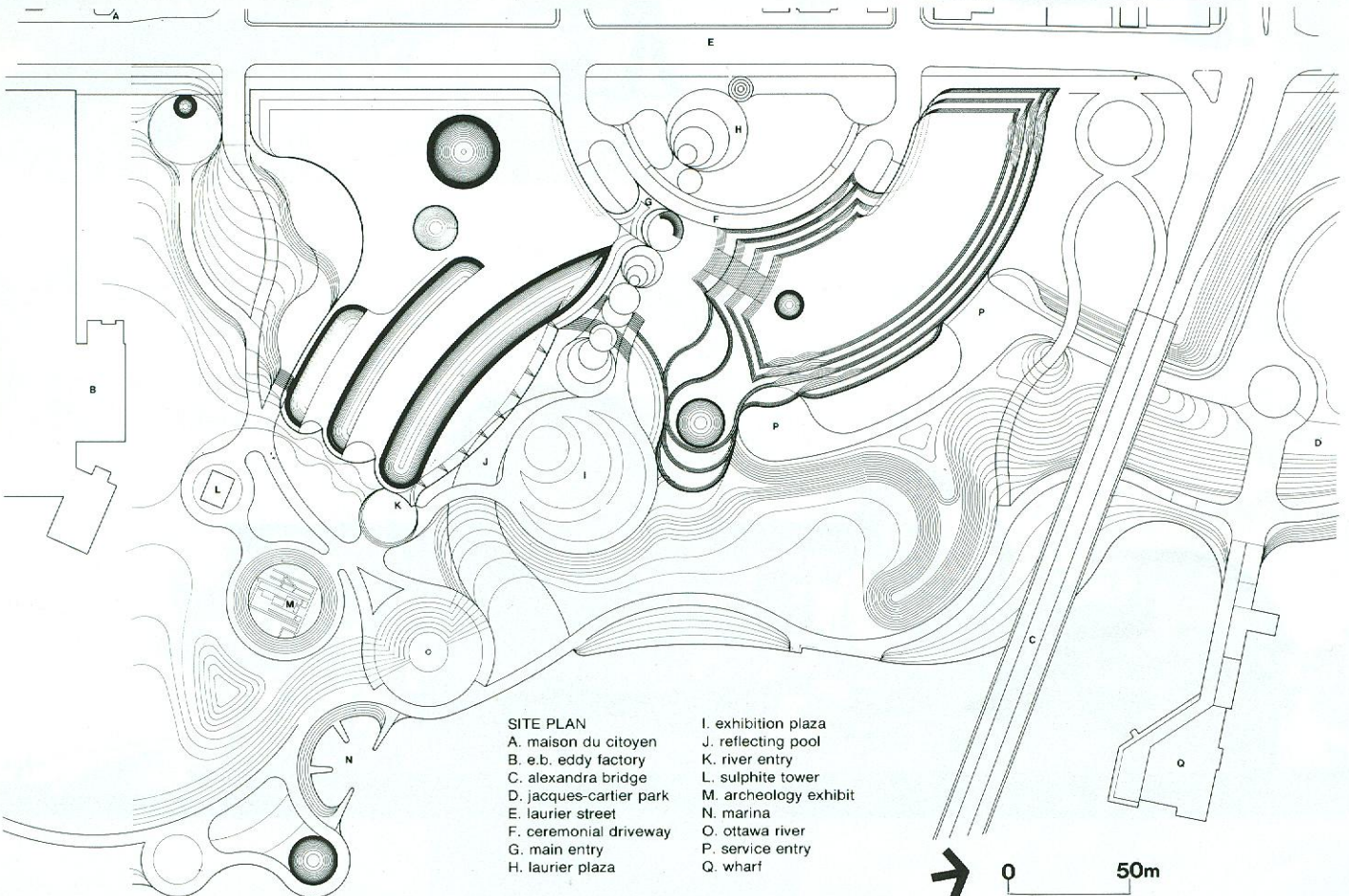
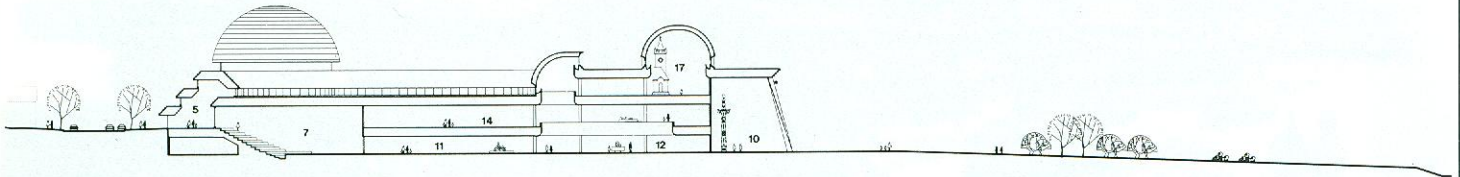


SECTION B



SECTION C

0 30m

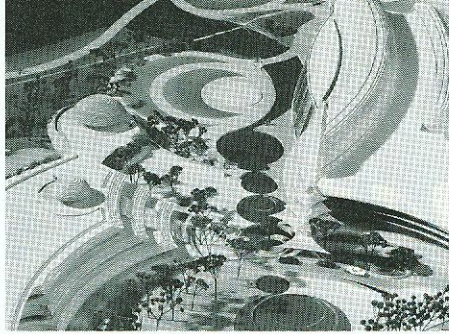


## SITE PLAN

- |                         |                       |
|-------------------------|-----------------------|
| A. maison du citoyen    | I. exhibition plaza   |
| B. e.b. eddy factory    | J. reflecting pool    |
| C. alexandra bridge     | K. river entry        |
| D. jacques-cartier park | L. sulphite tower     |
| E. laurier street       | M. archeology exhibit |
| F. ceremonial driveway  | N. marina             |
| G. main entry           | O. ottawa river       |
| H. laurier plaza        | P. service entry      |
|                         | Q. wharf              |

0 50m

The Canadian Architect  
February 1984  
p 32-35

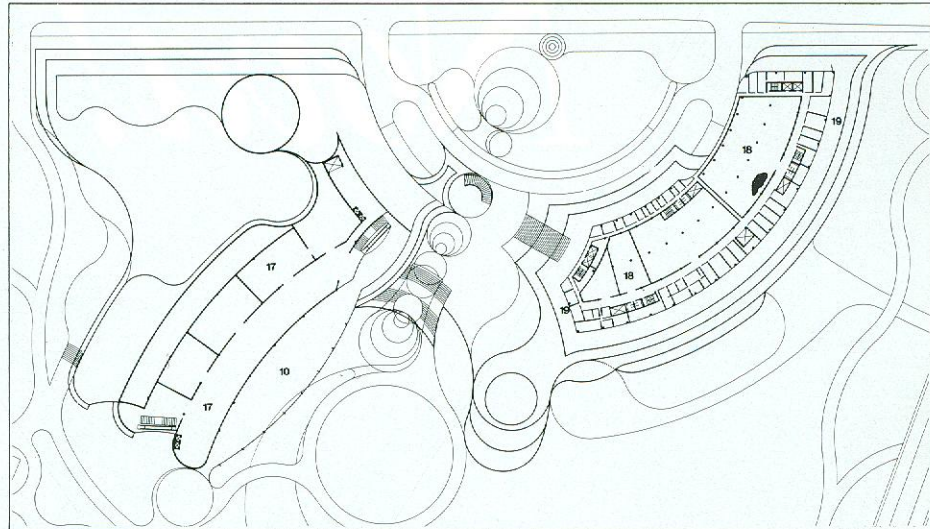


Left: from Laurier Street looking east over the semicircular entrance plaza of the National Museum. A line of artificial pools divides the administrative pavilion on the left from the exhibition halls on the right.

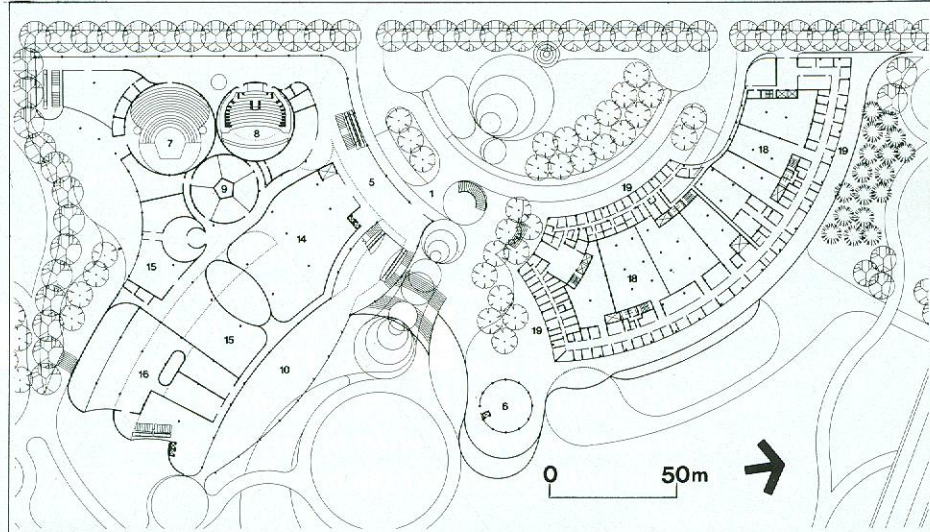
The 39 000 m<sup>2</sup> National Museum of Man, currently under construction on Laurier Park on the opposite side of the Alexandra Bridge which links the site with Ottawa, will have picturesque views of the parliament buildings and terminal locks of the old Rideau Canal. The building's fluid organic forms echo the structure of the site while efficiently accommodating the museum's needs.

Design architect Douglas Cardinal gives an urban presence on Laurier Street while providing views across the river both from the intersection of Laurier and St. Laurent, northwest of the site, and through the building by fanning it open midway along its facade to create the entrance esplanade. Since the museum will often be seen from heights (the escarpment of Parliament, the Interprovincial Bridge, Nepean point with the new gallery), he has made the roofscape a varied and harmonious combination of forms. Cardinal has produced as the museum's most memorable space, a grand hall with, on one side, a glass wall with views over the river and toward the parliament buildings and, on the other, entrances into the exhibition halls.

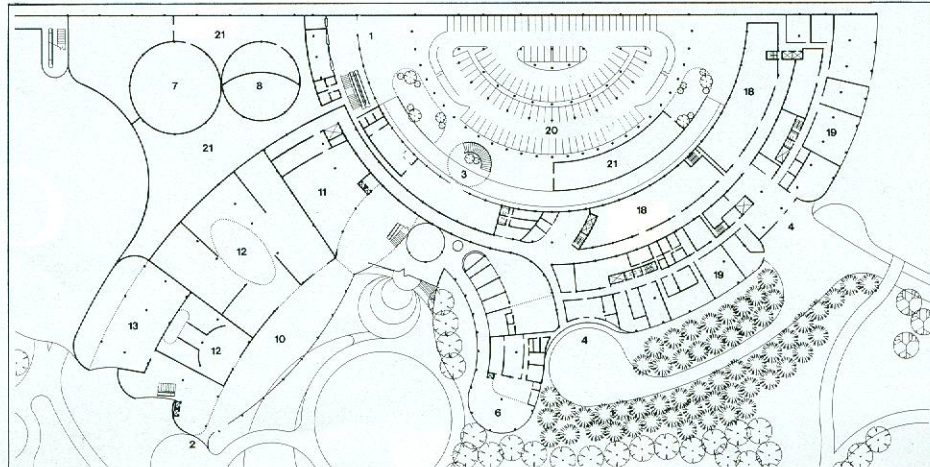
Electrical engineer is Les Consultants Dessau; mechanical, Bouthillette Parizeau et Associés; structural, Asselin Benoit Boucher Ducharme Lapointe. Construction manager is Concordia Management.



LEVEL 3



LEVEL 2



LEVEL 1

#### KEY TO PLANS AND SECTIONS

1. main entry
2. river entry
3. group entry
4. service entry
5. lobby
6. restaurant or cafeteria
7. auditorium
8. imax-omnimax theatre
9. education
10. grand hall
11. special exhibits hall
12. ethnology halls
13. archeology halls
14. overview hall
15. children's museum
16. folk halls
17. history halls
18. collection holdings
19. offices and support
20. parking
21. service