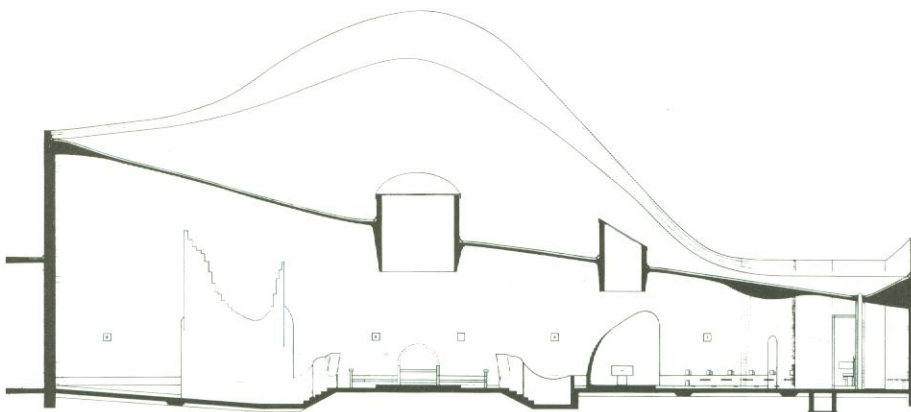
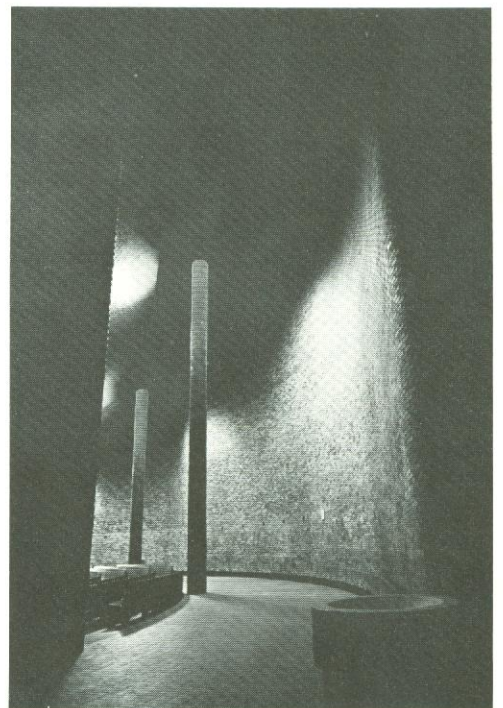
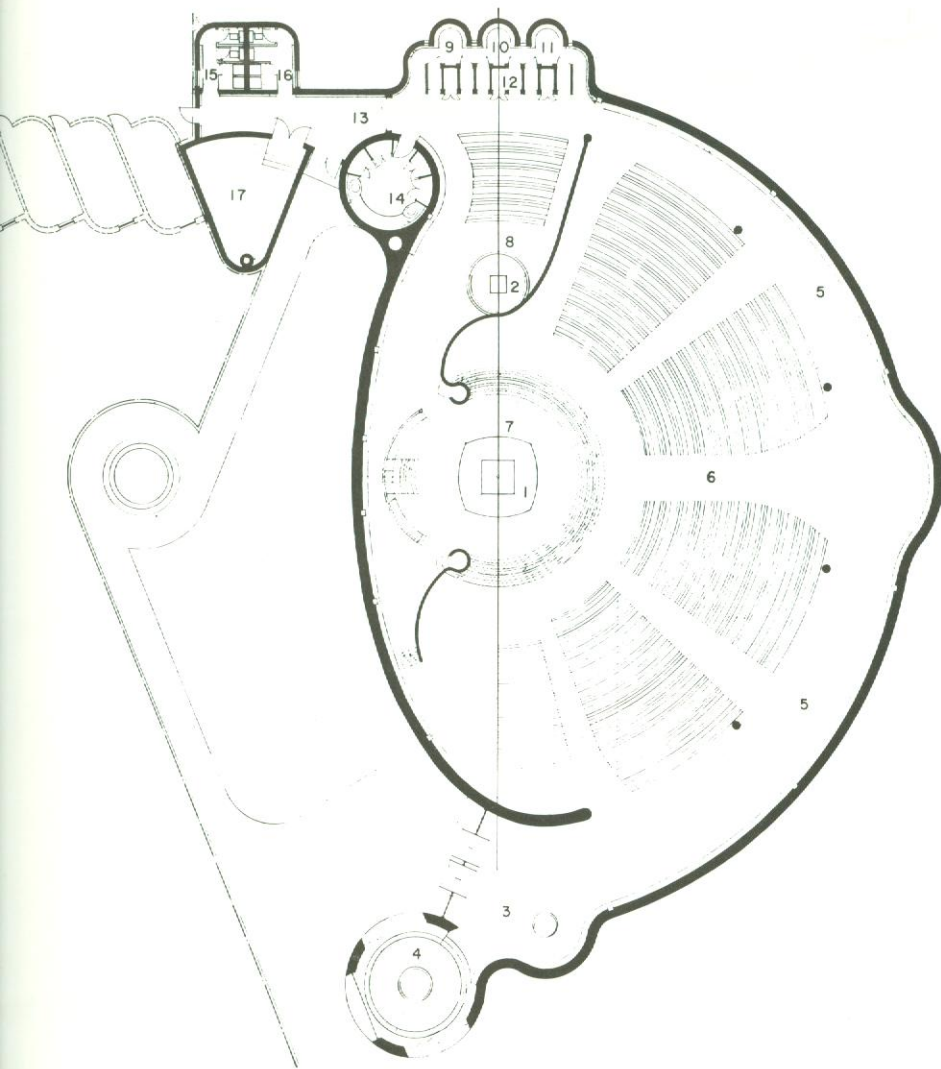


SAINT MARY'S CHURCH
 Red Deer, Alberta, Canada
 Douglas Cardinal, architect

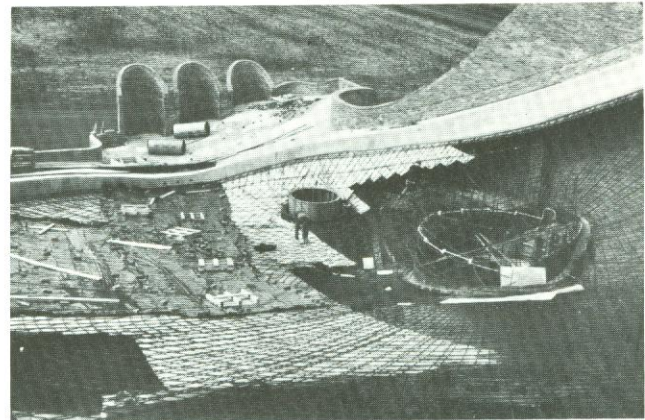
In planning the design of this building it was considered desirable to have flowing and graceful lines. The roof, floor, and walls of the church are of masonry and reinforced concrete. In the main body of the interior the altar is, of course, the focal point, with a circular light source directly above. The altar stone was quarried in Manitoba.





1. Altar
2. Tabernacle
3. Entrance
4. Baptistry
5. Ambulatory
6. Nave
7. Sanctuary
8. Eucharistic chapel
- 9-10-11-12. Confessionals
13. Passage
14. Sacristy
- 15-16. Toilets
17. Mechanical room

Negative reversed



The roof (see section) is a catenary post-tensioned reinforced concrete shell which is constructed with cables and mesh used as the integral form as well as the reinforcing. It is amorphous in composition, serving as a canopy over the people and a baldachino over the main altar. The roof sweeps down over the high wall which backs the sanctuary, down low over the main altar. A skylight bathes the altar with light.

The whole structure is supported on large piles each carrying two hundred tons which sit on large pads fifty feet below the ground. The acoustics are designed for speaking and music. The interior shape is designed to disburse the sound evenly. The congregation is close to the altar for full participation.